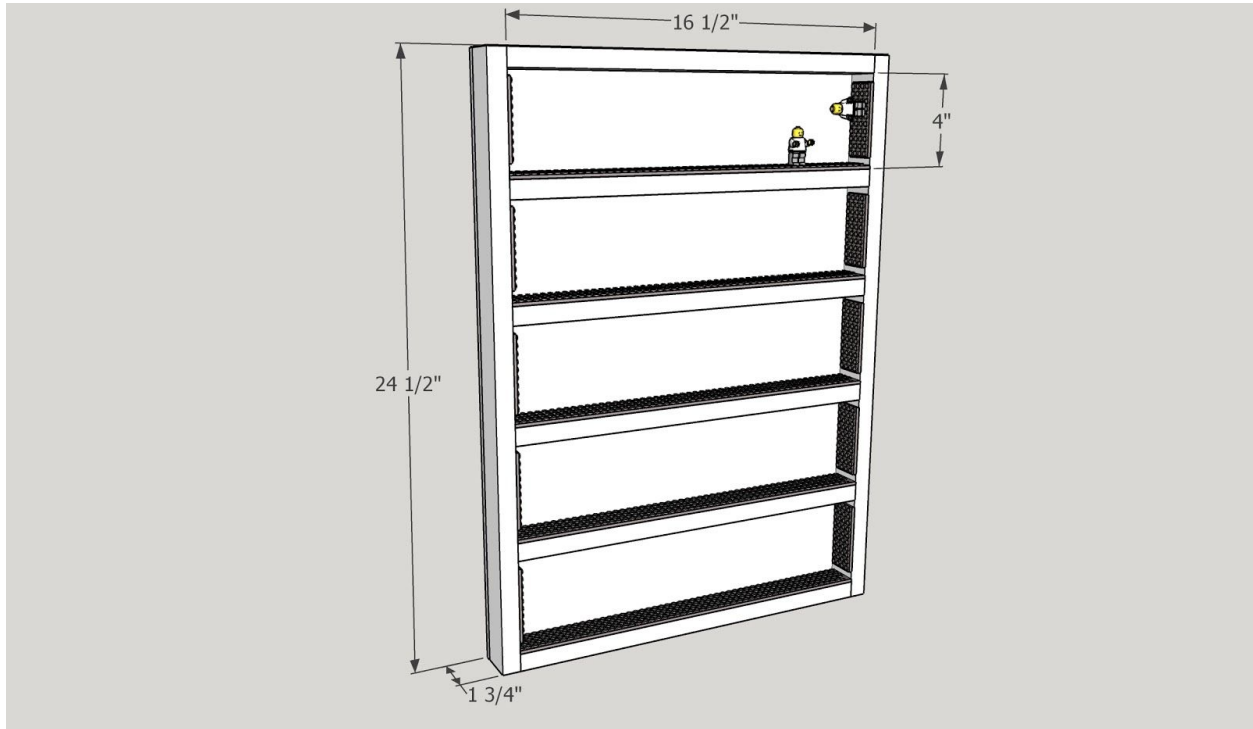


DIY Lego Minifigure Display Case
Plans by The Handyman's Daughter
Copyright 2018



Materials Needed - [See blog post for links](#)

- Two 8' long 1 x 2 boards
- 18" x 24 1/2" sheet of 1/4" plywood
- Wood glue
- Square
- Countersink bit
- 1 1/4" screws
- Wood filler
- Sander and sandpaper
- Brad nailer and 3/4" brad nails
- Adhesive Lego tape
- Paint
- Picture hanging hardware

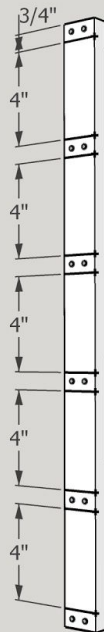
Cut List

- Two 1x2 at 24 ½"
- Six 1x2 at 16 ½"
- One sheet of ¼" plywood cut to 18" x 24 ½"

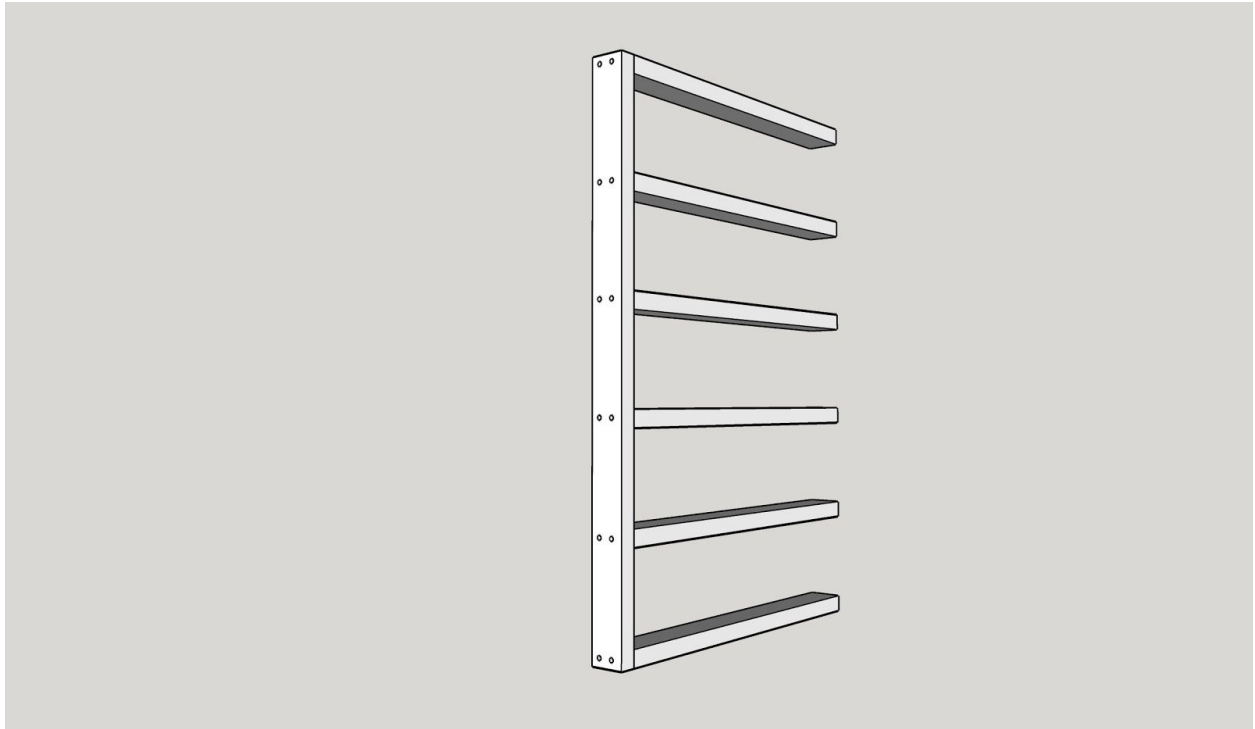
Instructions

Cut, sand and paint all shelf pieces. Leave one wide side of the longer pieces unpainted for now.

Mark the position of each shelf along the unpainted side of the longer pieces. Drill two countersink pilot holes in each position. Drill two corresponding pilot holes into each end of the shelf pieces.



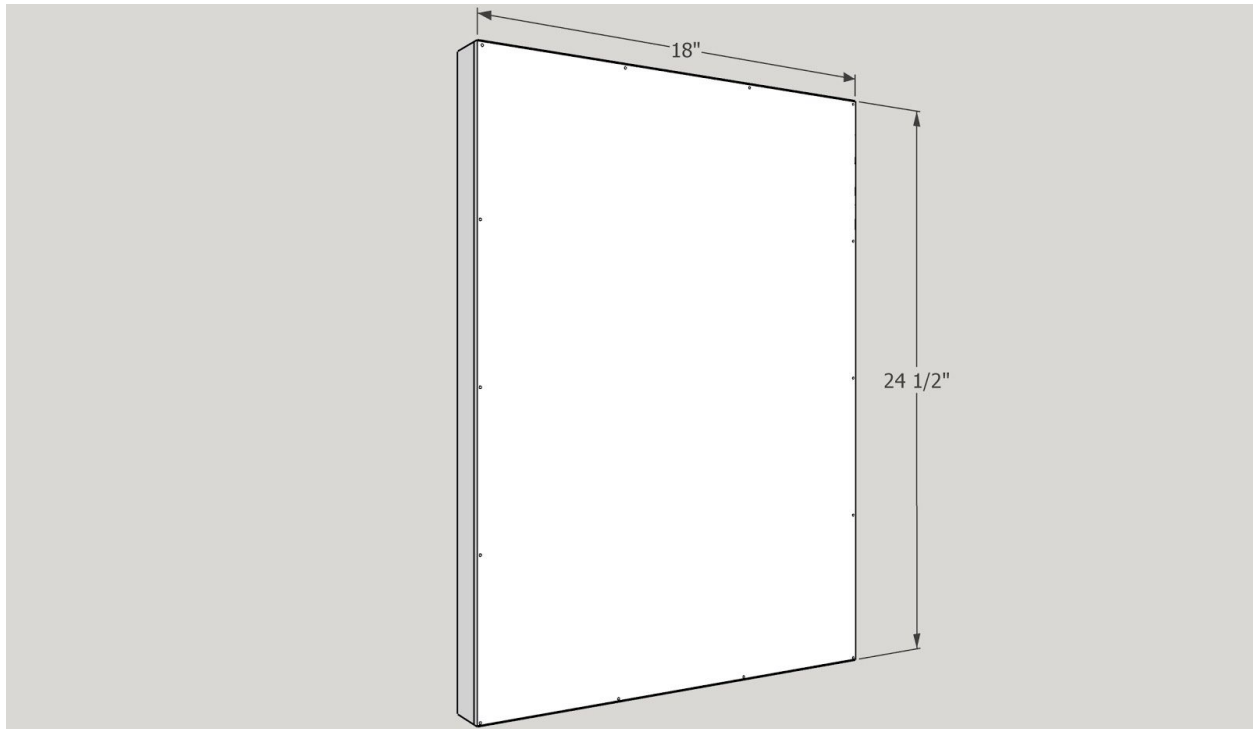
Attach the shelves to the side pieces with 1 ¼" screws, making sure that the screw heads are slightly below the surface of the wood.



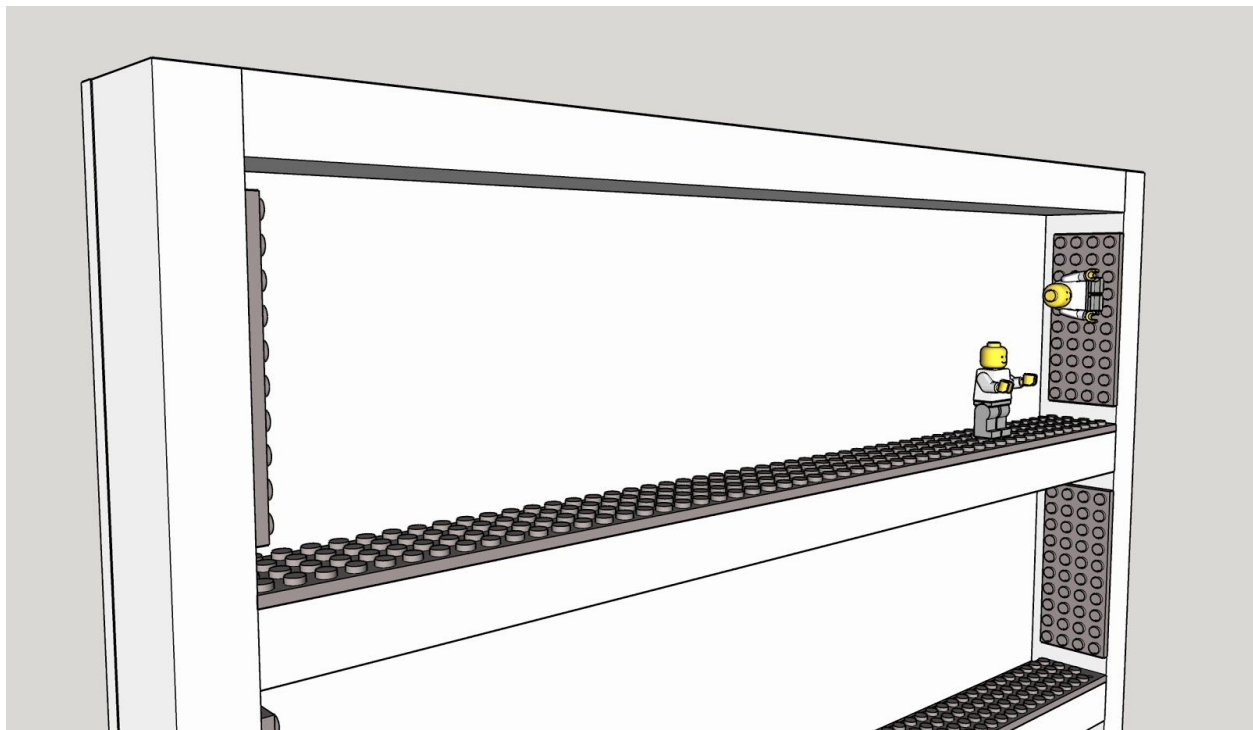
Attach the other side, checking that the shelves are square. Once assembled, fill the screw holes with wood filler, then sand smooth and paint.



Attach the 18" x 24 ½" piece of ¼" plywood to the back of the shelves with ¾" brad nails.



Cut and stick Lego adhesive tape to bottom, sides and top for three-dimensional play!



Hang on the wall with your preferred picture hanging hardware!

